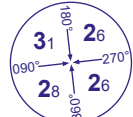
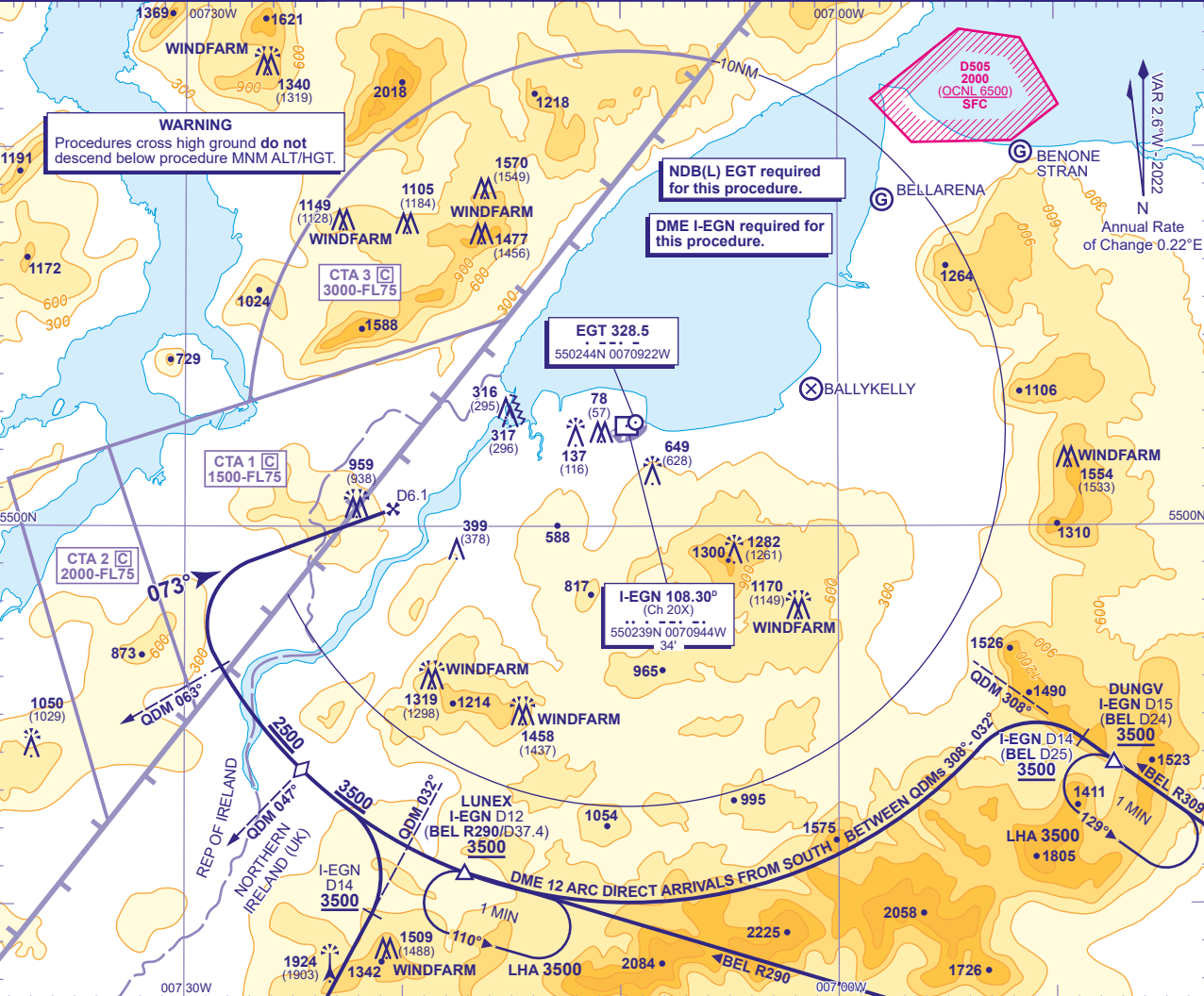
 MSA 25NM NDB(L) EGT	 MSA 7NM NDB(L) EGT	APP 123.625	EGLINTON APPROACH	AD ELEVATION 23	<div>Direct Arrivals</div> <div>RWY 08</div> <div>(ACFT CAT A,B,C,D)</div>
		TWR 134.155	EGLINTON TOWER	THR ELEVATION 21	
		ATIS 119.380	EGLINTON INFORMATION	OBSTACLE ELEVATION 1570 AMSL (1549) (ABOVE THR)	
				BEARINGS ARE MAGNETIC	
				TRANSITION ALTITUDE 3000	



DIRECT ARRIVALS VIA BEL VOR R309/DUNGV HOLD
Arrival not below 3500. Intercept and establish on BEL VOR R309. At I-EGN DME 14 (nominal BEL DME 25) turn left to intercept and follow I-EGN DME 12 arc. At QDM 047° descend to 2500. At lead QDM 063° commence right turn to establish on LOC/FAT. When established continue as for main procedure.

DIRECT ARRIVALS VIA BEL VOR R290/LUNEX HOLD
Arrival not below 3500. Intercept and establish on BEL VOR R290. At BEL R290/D37.4 intercept and follow I-EGN DME 12 arc clockwise. When established and West of QDM 047° descend to not below 2500. At lead QDM 063° turn right to establish on LOC/FAT, then continue as for main procedure.

NOTE 1 Aircraft are permitted to enter the Eglinton CTA areas whilst using these procedures and under the control of Eglinton ATC.